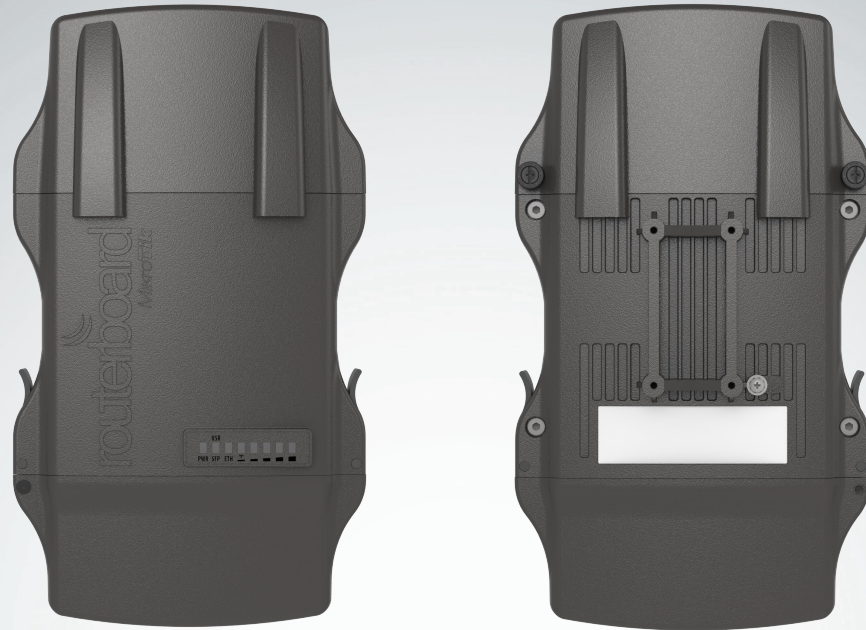


NetMETAL 5

By supporting the 802.11ac wireless standard, the NetMETAL allows to use datarates of up to 1.3Gbps (for the T models), 256-QAM modulation and 20/40/80MHz channels. With it's huge speed improvements, 802.11ac opens up new possibilities.

The NetMETAL is a completely new product in a waterproof enclosure. Its rugged design is made to withstand the toughest conditions, but at the same time is easy to use and can be opened and closed with one hand. The solid aluminium enclosure also works as a reliable heatsink for it's high output power radio.

RB922 models have miniPCI-e slot for another wireless card.



Order code	RB921UAGS-5SHPaC-T-NM	RB921UAGS-5SHPaC-D-NM	RB922UAGS-5HPaC-T-NM	RB922UAGS-5HPaC-D-NM
CPU	QCA9557 720MHz network processor			
Memory	128MB DDR2 onboard memory			
Ethernet	One Gigabit port with Auto-MDI/X			
SFP	1x SFP cage available			
Extras	Beeper, signal and status LEDs, voltage and temperature sensors			
Supported channels	20/40/80MHz			
Expansion	USB 2.0 port		USB 2.0 port, 1x MiniPCIe slot, SIM slot (requires 3g miniPCIe card)	
Power input	PoE in: 8-30V DC on Ether1 (Non 802.3af)			
Operating conditions	-40C to +70C tested. Enclosure is sealed to conform with IP54 standard.			
Consumption	23W	21W	23W	17W
Dimensions	143x247x48mm; Weight: 865g			
OS	MikroTik RouterOS, Level4 license, free product lifetime upgrdes			
Kit includes	RB922/R921 outdoor unit, Power adapter 24V 1.2A, PoE injector, miniPCIe mounting screws, DIN rail mount, metal mounting ring, 2x plastic mounting loops			

	RB921UAGS-5SHPaC-T-NM	RB921UAGS-5SHPaC-D-NM	RB922UAGS-5HPaC-T-NM	RB922UAGS-5HPaC-D-NM
Wireless	QCA9880 5GHz 802.11ac	QCA9882 5GHz 802.11ac	QCA9880 5GHz 802.11ac	QCA9882 5GHz 802.11ac
Chains	Triple chain	Dual chain	Triple chain	Dual chain
Connector type	RP-SMA Female (outside thread)			
Connectors	3x	2x	3x	2x
TX/RX at MCS0	33dBm / -96dBm	31dBm / -96dBm	32dBm / -96dBm	30dBm / -96dBm
TX/RX at MCS7	31dBm / -77dBm	29dBm / -77dBm	29dBm / -77dBm	27dBm / -77dBm
TX/RX at MCS9	27dBm / -72dBm	25dBm / -72dBm	24dBm / -72dBm	22dBm / -72dBm
TX/RX at 6Mbit	33dBm / -96dBm	31dBm / -96dBm	33dBm / -96dBm	31dBm / -96dBm
TX/RX at 54Mbit	31dBm / -81dBm	29dBm / -81dBm	29dBm / -81dBm	27dBm / -81dBm
Frequency range	4920-6100 MHz, Operating range limited by Country Regulations			



24V 1.2A Adapter Metal ring Gigabit PoE injector DIN mount miniPCIe screws