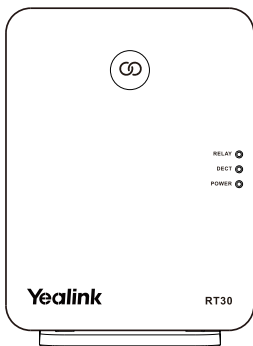


Yealink

DECT Repeater RT30



User Guide(V1.3)

www.yealink.com



RT30



Base Stand

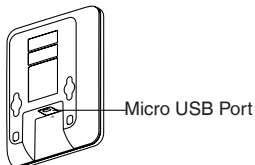
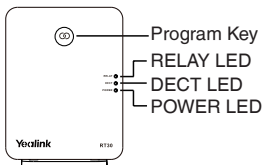


Power Adapter and Cable



User Guide

Overview



LED Status

RT30 Status	POWER	DECT	RELAY
Search for base station	Green	Flashing red	Off
Registering to base station	Green	Flashing orange	Off
Registered to base station, ready for use	Green	Green/Orange	Off
Registered to base station, in a call	Green	Green/Orange	Green
Registered to base station, in calls (reach the maximum number of calls)	Green	Green/Orange	Red
Error: Repeater ID conflict	Green	Alternately flashing red and green	Off
Repeater ID confirmation	Green	Red	Flashing green ^[1]
Repeater ID modification	Red	Red	Off
Auto cascade registration	Orange	Flashing green	Off
Manual cascade registration	Orange	Green	Flashing red ^[1]
De-register the repeater	Red	Red	Red

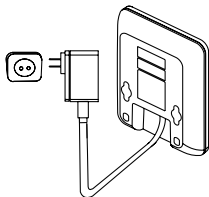
^[1] The number of flashes indicates the current ID repeater. When it flashes once, the ID is 1.

Radio Link Status	DECT LED
Excellent to good	Green
Poor	Orange

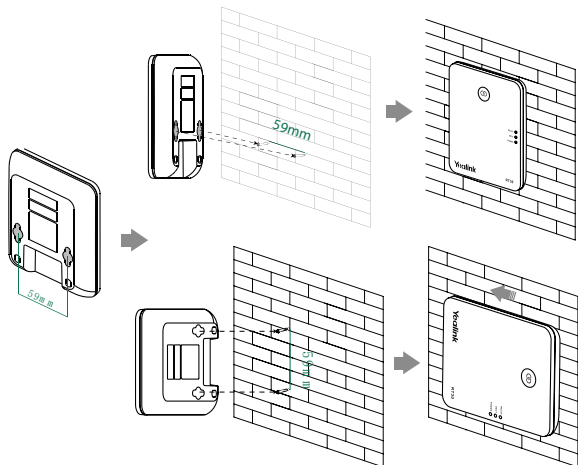
Installation

Connect the power for the repeater:

1. Connect RT30 to a power outlet using the provided cable and USB power adapter.

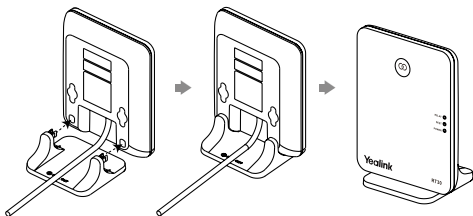


Wall mount:



Attach the base stand:

1. Align the snap-fits with the corresponding holes and push forward, snapping them into the holes.



Introduction

Yealink DECT repeater RT30 is designed in accordance with Digital Enhanced Cordless Telecommunication (DECT) standard. It can be deployed to extend the range of the Yealink DECT IP phone (for example, W60P).

Note: To support up to four calls, please check the firmware version: RT30 version: 83.0.0.22 or later; W70B version: 146.85.0.35 or later.

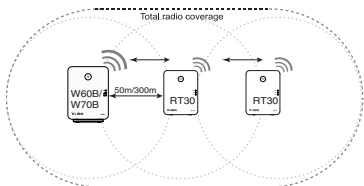
Multiple Repeaters

If the radio link level of RT30 is excellent to good, each repeater can have up to four calls (external and internal calls) at any time.

The repeater can be used to extend the range (up to 300 m in unobstructed outdoor areas and up to 50 m inside buildings) in a single direction or in all directions. The automatic handover process is seamless. If the repeater is placed properly (overlapping the coverage of the base station), the handsets can move freely within the total coverage while on a call.

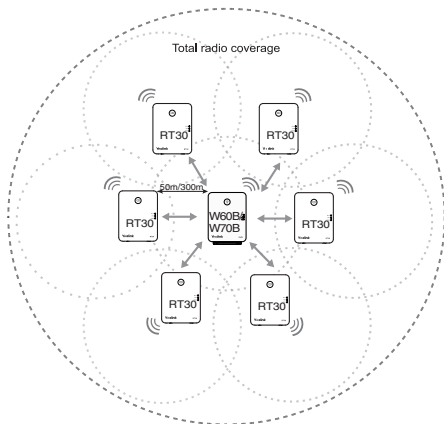
Cascade setup:

RT30 supports a sequential or "daisy chain" layout to extend the range in a single direction. Up to 2 repeaters can be installed in this layout.



Star setup:

Up to 6 repeaters can be registered to one base station to extend the range in a star layout. All repeaters must be installed within the base station coverage, as shown in the figure below.



Registering the Repeater

Registration

If you want to register more than one repeater, in order to avoid ID conflict, we recommend that you put the repeaters closer to the base station and register the repeaters one by one.

1. Plug the repeater into an AC outlet.

POWER LED turns green and DECT LED flashes red.

2. Set the handset in **RT30** repeater mode at the path: **Settings->System Settings->Repeater Mode**.

3. Set the base station in registration mode (Long press the paging key on the base station till the first LED flashes green).

If base station is found, DECT LED will flash orange.

When DECT LED turns green/orange, the registration to base station is successful.

Cascade Registration

Up to 2 repeaters can be registered to the base station in a cascade setup.

Before the cascade registration, you should first register the two repeaters to the base station. For cascade registration, we recommend that you put the two cascaded repeaters closer to each other. One repeater attempts to register to the other repeater (destination repeater). If the destination repeater de-registers, the repeater does as well. Conversely, it does not.

The repeater supports automatic or manual cascade registration.

Auto Cascade Registration

1. Long press the program key on one repeater for about 3 seconds.

The repeater starts searching for the other repeater, POWER LED turns orange and DECT LED flashes green.

Wait until POWER LED turns green and DECT LED turns green/orange, auto cascade registration is successful.

Manual Cascade Registration

1. On one repeater:

a. Confirm the ID: Press the program key. The number of times that RELAY LED flashes indicates the ID. Press the program key again to return to the operation mode.

2. On the other repeater:

a. Long press the program key for about 3 seconds.

b. Press the program key as soon as POWER LED turns orange and DECT LED flashes green, to enter the repeater's ID to be cascaded. Pressing once indicates that the ID is 1.

POWER LED turns orange and DECT LED turns green.

c. Press the program key for about 3 seconds to confirm the ID.

The repeater starts searching for the repeater to be cascaded, POWER LED turns green and DECT LED flashes orange.

Wait until POWER LED turns green and DECT LED turns green/orange, manual cascade registration is successful.

ID Modification

After registering to the base station, every repeater has its own ID, it uses ID to distinguish with each other. If the IDs of two repeaters conflict, you need to modify the ID manually.

1. Press the program key to confirm the ID.

2. Long press the program key for about 7 seconds to enter the ID modification mode.

Both POWER LED and DECT LED turns red.

3. Press the program key to enter the new ID. Pressing once indicates that the ID is 1.

The number of times that the RELAY LED flashes indicates the entered ID.

4. Long press the program key for about 3 seconds to confirm the ID.

The repeater will re-register.

De-registration

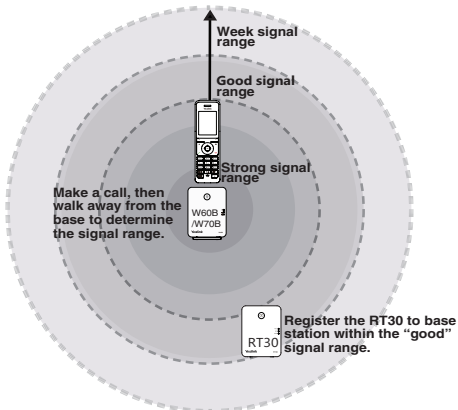
1. Power off the repeater.
2. Long press the program key and reconnect the power adapter.
3. Hold the program key until the three LEDs turn red.

When the DECT LED flashes red, and the de-registration is successful.

Placement

To achieve optimum performance for the repeater, it is important to find a appropriate location.

1. Hold the handset and stand near the base.
2. Make a call, and carry the handset away from the base.
3. Make a note where you start to hear noise on the line, which indicates the signal strength is getting weaker.



The optimum location for the repeater is as far from the base as possible while still maintaining a good signal, or just inside the location where the noise became noticeable.

Here are a few tips for placing repeaters:

- Choose a raised position for both the base station and repeater wherever possible.
- When positioning the repeater, avoid obstacles that can interfere with radio transmission, such as thick wall and metal structures.
- Place the repeater away from other electrical appliances, such as microwave ovens, Wi-Fi equipment and computers.
- Keep a minimum of 10 meters between multiple repeaters to avoid coverage overlapping.

Regulatory Notices

Operating Ambient Temperatures

- Operating temperature: +32 to 104°F (0 to 40°C)
- Relative humidity: 5% to 90%, noncondensing
- Storage temperature: -22 to +160°F (-30 to +70°C)

Warranty


Our product warranty is limited only to the unit itself, when used normally in accordance with the operating instructions and the system environment. We are not liable for damage or loss resulting from the use of this product, or for any claim from a third party. We are not liable for problems with Yealink device arising from the use of this product; we are not liable for financial damages, lost profits, claims from third parties, etc., arising from the use of this product.

Explanation of the symbols

•DC symbol

 is the DC voltage symbol.

•WEEE Warning symbol

 To avoid the potential effects on the environment and human health as a result of the presence of hazardous substances in electrical and electronic equipment, end users of electrical and electronic equipment should understand the meaning of the crossed-out wheeled bin symbol. Do not dispose of WEEE as unsorted municipal waste and have to collect such WEEE separately.

•Restriction of Hazardous Substances Directive (RoHS)

This device complies with the requirements of the EU RoHS Directive. Statements of compliance can be obtained by contacting support@yealink.com.

•Safety Instructions

Save these instructions. Read these safety instructions before use!

General Requirements

- Before you install and use the device, read the safety instructions carefully and observe the situation during operation.
- During the process of storage, transportation, and operation, please always keep the device dry and clean, avoid collision and crash.
- Please attempt not to dismantle the device by yourself. In case of any discrepancy, please contact the appointed maintenance center for repair.
- Please refer to the relevant laws and statutes while using the device. Legal rights of others should be respected as well.

Environmental Requirements

- Place the device at a well-ventilated place. Do not expose the device under direct sunlight.
- Keep the device dry and free of dusts.
- Do not place the device on or near any inflammable or fire-vulnerable object, such as rubber-made materials.
- Keep the device away from any heat source or bare fire, such as a candle or an electric heater.

Operating Requirements

- Do not let a child operate the device without guidance.
- Do not let a child play with the device or any accessory in case of accidental swallowing.
- Please use the accessories provided or authorized by the manufacturer only.

- The power supply of the device shall meet the requirements of the input voltage of the device. Please use the provided surge protection power socket only.
- Before plugging or unplugging any cable, make sure that your hands are completely dry.
- Do not spill liquid of any kind on the product or use the equipment near water, for example, near a bathtub, washbowl, kitchen sink, wet basement or near a swimming pool.
- During a thunderstorm, stop using the device and disconnect it from the power supply. Unplug the power plug and the Asymmetric Digital Subscriber Line (ADSL) twisted pair (the radio frequency cable) to avoid lightning strike.
- If the device is left unused for a rather long time, disconnect it from the power supply and unplug the power plug.
- When there is smoke emitted from the device, or some abnormal noise or smell, disconnect the device from the power supply, and unplug the power plug immediately.
- Contact the specified maintenance center for repair.
- Do not insert any object into equipment slots that is not part of the product or auxiliary product.
- Before connecting a cable, connect the grounding cable of the device first. Do not disconnect the grounding cable until you disconnect all other cables.

Operating Requirements

- Before cleaning the device, disconnect it from the power supply.
- Use a piece of soft, dry and anti-static cloth to clean the device.
- Keep the power plug clean and dry.

Troubleshooting

The unit cannot supply power to Yealink device.

There is a bad connection with the plug.

1. Clean the plug with a dry cloth.
2. Connect it to another wall outlet.

The usage environment is out of operating temperature range.

1. Use in the operating temperature range.

The cable between the unit and the Yealink device is connected incorrectly.

1. Connect the cable correctly.

You cannot connect the cable properly.

1. You may have connected a wrong Yealink device.
2. Use the correct power supply.

Some dust, etc., may be in the port.

1. Clean the port.

Contact your dealer or authorized service facility for any further questions.

FCC Statement

This device complies with part 15 of the FCC Rules. Operation is subject to the following two conditions: (1) this device may not cause harmful interference, and (2) this device must accept any interference received, including interference that may cause undesired operation. Any Changes or modifications not expressly approved by the party responsible for compliance could void the user's authority to operate the equipment.

IC Statement

This device complies with Industry Canada's licence-exempt RSSs. Operation is subject to the following two conditions:

- (1) this device may not cause interference; and

(2) this device must accept any interference, including interference that may cause undesired operation of the device. CAN ICES-3(B)

Le présent appareil est conforme aux CNR d'Industrie Canada applicables aux appareils radio exempts de licence. L'exploitation est autorisée aux deux conditions suivantes :

(1) l'appareil ne doit pas produire de brouillage;

(2) l'utilisateur de l'appareil doit accepter tout brouillage radioélectrique subi, même si le brouillage est susceptible d'en compromettre le fonctionnement. NMB-3(B)

Radiation Exposure Statement

This equipment complies with FCC and IC radiation exposure limits set forth for an uncontrolled environment. This equipment should be installed and operated with minimum distance 20cm between the radiator and your body.

Cet émetteur ne doit pas être Co-placé ou ne fonctionnant en même temps qu'aucune autre antenne ou émetteur. Cet équipement devrait être installé et actionné avec une distance minimum de 20 centimètres entre le radiateur et votre corps.

Contact Information

YEALINK NETWORK TECHNOLOGY CO.,LTD.

309, 3rd Floor, No.16, Yun Ding North Road, Huli District, Xiamen City, Fujian, P.R. China

YEALINK (EUROPE) NETWORK TECHNOLOGY B.V.

Strawinskyaan 3127, Atrium Building, 8th floor, 1077ZX Amsterdam, The Netherlands

YEALINK (USA) NETWORK TECHNOLOGY CO., LTD.

999 Peachtree Street Suite 2300, Fulton, Atlanta, GA, 30309, USA

Made in China

About Yealink

Yealink is a global leading provider of enterprise communication and collaboration solutions, offering video conferencing service to worldwide enterprises. Focusing on research and development, Yealink also insists on innovation and creation. With the outstanding technical patents of cloud computing, audio, video and image processing technology, Yealink has built up a panoramic collaboration solution of audio and video conferencing by merging its cloud services with a series of endpoints products. As one of the best providers in more than 140 countries and regions including the US, the UK and Australia, Yealink ranks No.1 in the global market share of SIP phones shipments.

Technical Support

Visit Yealink WIKI (<http://support.yealink.com/>) for the latest firmware, guides, FAQ, Product documents, and more. For better service, we sincerely recommend you to use Yealink Ticketing system (<https://ticket.yealink.com>) to submit all your technical issues.



RT30-EN

Web: www.yealink.com
Copyright©2022 YEALINK(XIAMEN) NETWORK
TECHNOLOGY CO.,LTD.All rights reserved.