

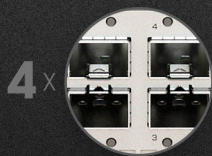


CRS520-4XS-16XQ-RM

An **ultra-fast enterprise switch**
with extra processing power due to the CCR series CPU &
the **best price per 100 Gigabit port** on the market!



LOW POWER CONSUMPTION:
ONLY UP TO 123W*
GREAT FOR YOUR WALLET,
GREAT FOR THE PLANET!



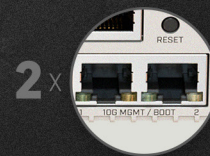
**25 GIGABIT
SFP28 PORTS**

(SUPPORT 1G / 2.5G / 10G / 25G SPEEDS,
depending on module)



**100 GIGABIT
QSFP28 PORTS**

(SUPPORT 4X 1G / 4X 2.5G / 4X 10G /
4X 25G / 1X 40G / 2X 50G / 1X 100G SPEEDS,
depending on module)



**10 GIGABIT
ETHERNET PORTS**

(SUPPORT 10M / 100M / 1G / 10G SPEEDS)



**4GB DDR4
RAM**



**HOT-SWAP
POWER SUPPLIES
& COOLING**



**MIGHTY
QUAD-CORE
2 GHZ ARM CPU**

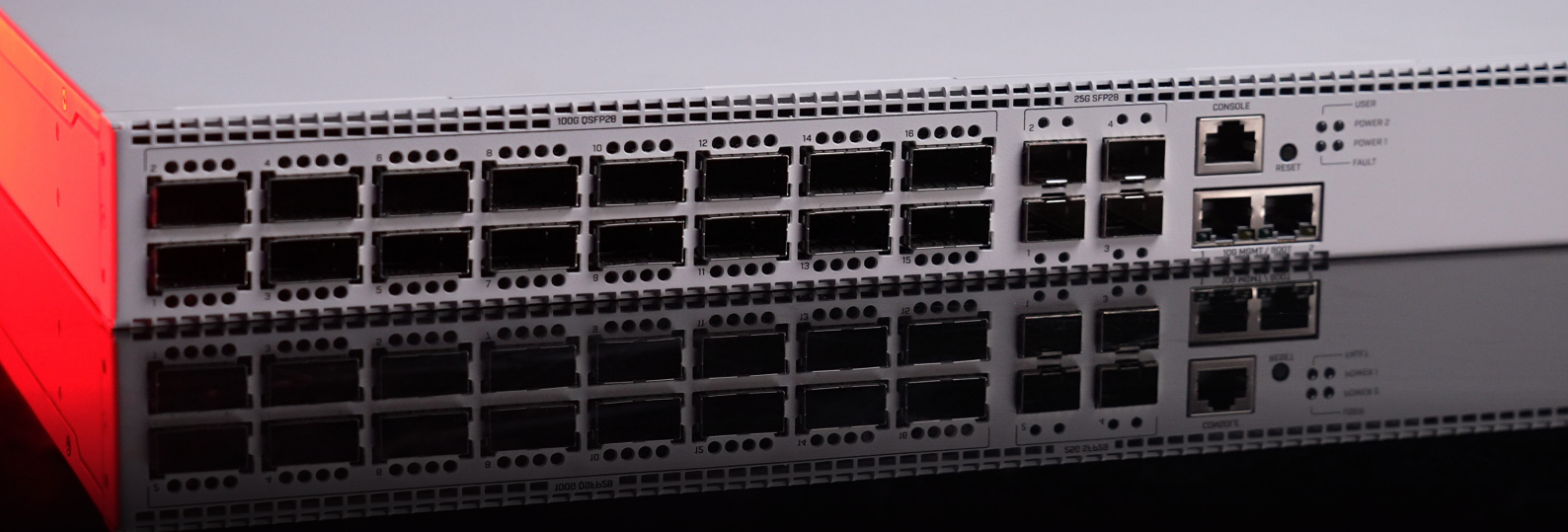


**CONSOLE
PORT**

* Depending on the attachments

Welcome to the forefront of networking: the future-proof CRS520-4XS-16XQ-RM with **extra processing power, 4 GB of DDR4 RAM**, and the best price per 100 Gigabit port we've seen so far.

With **16x 100 Gigabit** QSFP28 ports, **4x 25 Gigabit** SFP28 ports, and an extra **pair of 10 Gigabit Ethernet** ports, this switch can bring a lot of value to complicated enterprise networks, data centers, multimedia studios, and other setups where you would typically use several devices. Now – a single CRS520 can do the trick!



Avid CCR users might recognize the **powerful quad-core ARM CPU** running at 2 GHz, and ask – why would a switch need all that power? Two reasons:

1) CRS520 is more than a switch. You can **run OSPF/BGP**, out-of-band/management **VPNs**, ACLs, Jumbo frames and even **L3HW Offloaded routing**;

2) Future-proofing: as our friends at Marvell keep expanding the capabilities of their spectacular switch-chips, our in-house software team is busy exploring ways to add even more Hardware Offloaded features. You can expect software updates that will take the CRS520 to the **next** level! And all that without any paywalls or subscriptions.

Two hot-swap power supplies and four hot-swap fans for cooling are included. This switch can also be powered by the [PW48V-12V150W](#) Hot Swap -48V DC telecom power supply, available separately.

• Specifications

| | |
|-----------------------------------------|--------------------------------------------------------------------------------------------------------|
| Product code | CRS520-4XS-16XQ-RM |
| CPU | Quad-Core AL52400 2 GHz |
| CPU architecture | ARM 64bit |
| Size of RAM | 4 GB |
| RAM type | DDR4 |
| Storage | 128 MB, NAND |
| Number of 1G/2.5G/5G/10G Ethernet ports | 2 (Support 10M / 100M / 1G / 10G speeds) |
| Number of 25G SFP28 ports | 4 (Support 1G / 2.5G / 10G / 25G speeds, depending on module) |
| Number of 100G QSFP28 ports | 16 (Support 4x 1G / 4x 2.5G / 4x 10G / 4x 25G / 1x 40G / 2x 50G / 1x 100G speeds, depending on module) |
| Switch chip model | 98CX8410 |
| Operating system | RouterOS v7 only, License level 5 |
| Dimensions | 443 x 367 x 44 mm |
| Operating temperature | -20°C to +50°C |

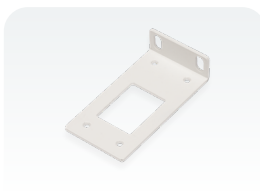
• Powering

| | |
|---------------------------------------------|-----------|
| Number of AC inputs | 2 |
| Nominal current | 10.25 A |
| Max current | 12.5 A |
| AC input range | 100-240 V |
| Frequency | 47-63 Hz |
| Max power consumption (without attachments) | 123 W |
| Max power consumption | 150 W |

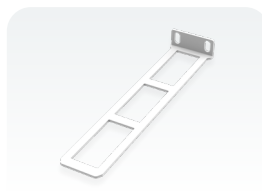
• Included parts



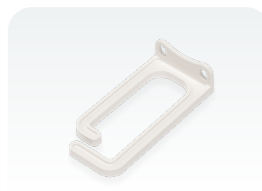
2 Power cords



Rackmount ears



Rackmount rear support ears



Cable management bracket



Fastening set