



LHG LTE18 kit

Great distances, even greater speed – with the power of the ultra fast LTE Category 18 modem.

Last-mile-internet solution for the most remote areas.



HIGH-SPEED INTERNET
EVEN WHEN YOUR
PHONE HAS NO SIGNAL!



BLAZING FAST
CAT18 LTE MODEM



GIGABIT ETHERNET
WITH POE-IN



POWERFUL 64-BIT
DUAL-CORE ARM CPU



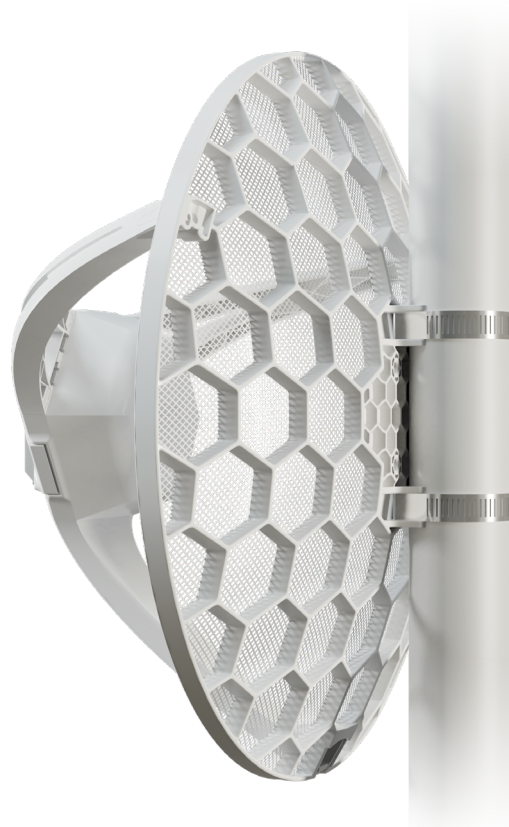
LARGE HIGH-GAIN
ANTENNA



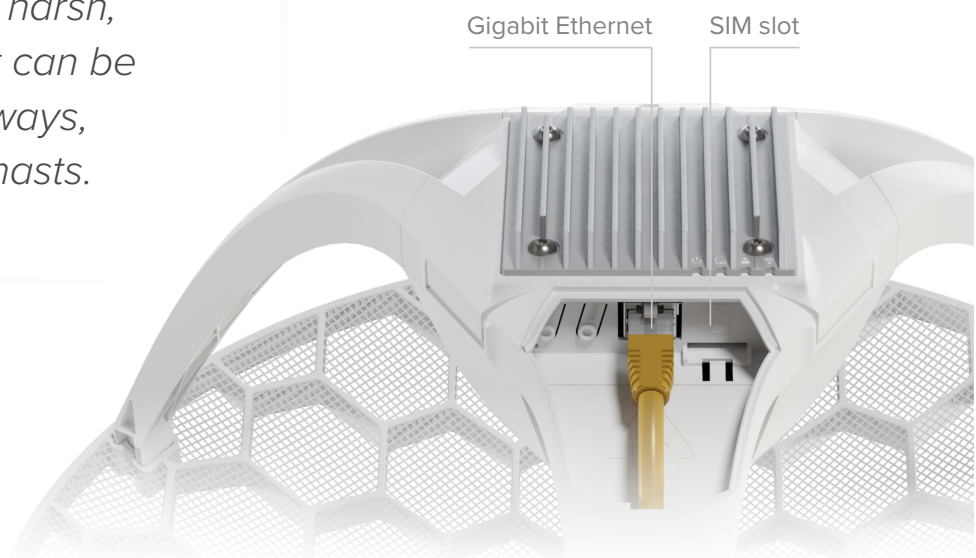
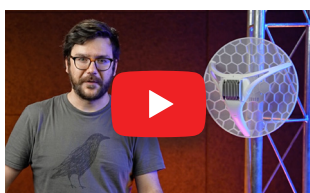
GRID ANTENNA DESIGN –
PERFECT FOR HARSH, WINDY
WEATHER

Speeds up to
one Gbps!

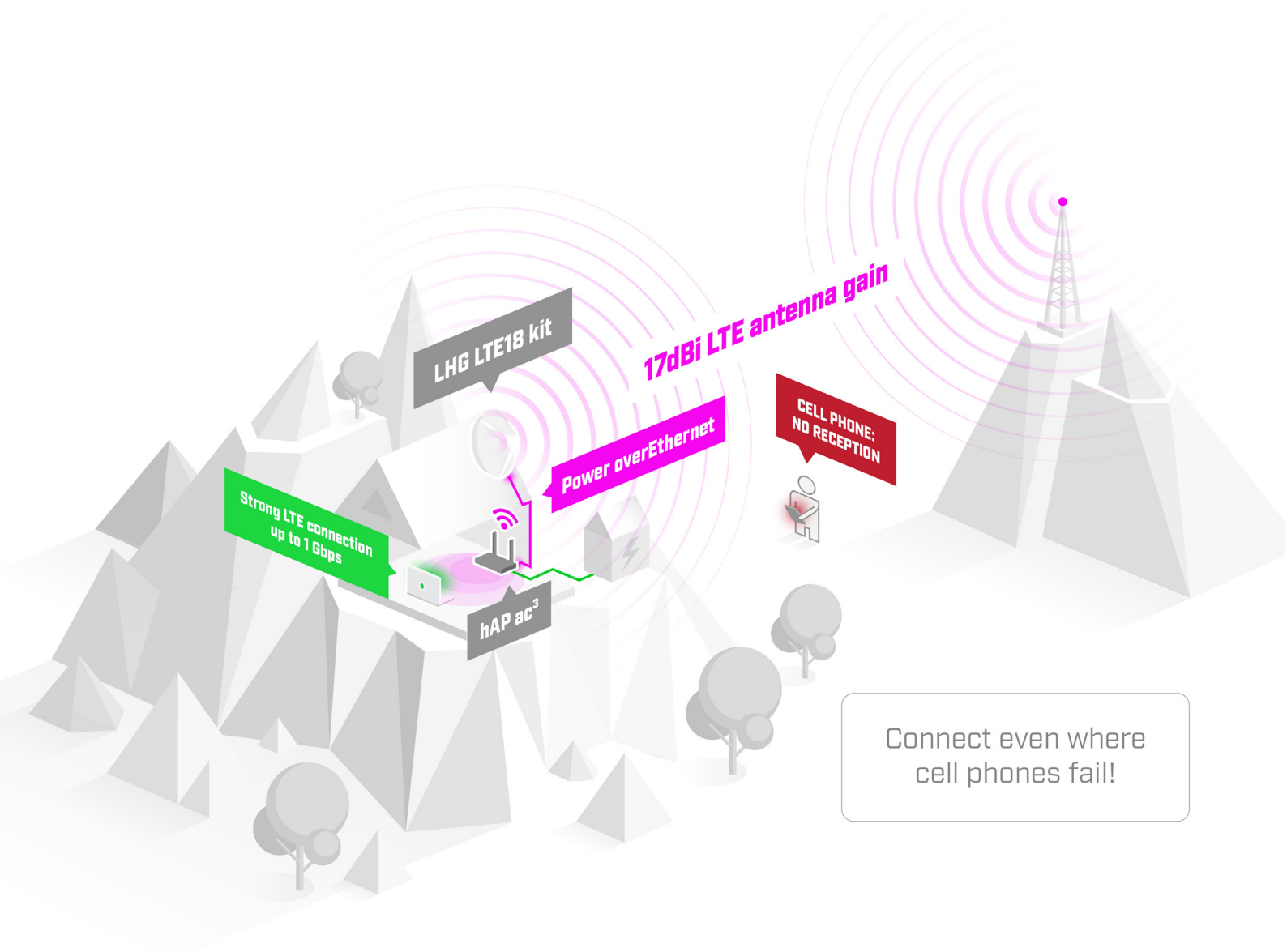
Like the previous LHG LTE models, this is a **last-mile-internet solution** for situations **when even your phone might not have any signal**. The new LHG comes with a cutting-edge Category 18 LTE modem – for the fastest mobile internet no matter where you are. This kit supports **speeds up to one Gbps!** Due to its **large high-gain 17 dBi antenna**, LHG LTE18 kit can connect to cell towers in extreme rural locations where nothing else is available.



There is a massive heat sink, so you don't have to worry about overheating. The grid antenna design can withstand harsh, windy weather. And it can be mounted in different ways, including poles and masts.



The LHG LTE18 kit features a 1.2 Gbps CAT18 LTE modem, which enables carrier aggregation and allows the device to use multiple bands at the same time. That is a huge advantage when there are a lot of LTE users in the area. It provides better responsiveness in a crowded environment and higher efficiency for weaker signal situations in the countryside. If you're competing for traffic in a place with poor connectivity, the new LHG will give you the upper hand. We have seen internet speed doubling in rural areas after switching to carrier aggregation, so there is no need to wait for cable network expansions.



There's a mighty high-gain antenna inside that supports a variety of LTE bands. It goes as high as 2.7 GHz. And it offers extensive low frequency coverage as well.

You'll be using the **Gigabit Ethernet** port with **PoE-in** for powering from an ethernet switch. But we've included an injector as well. There's a standard **MicroSIM slot** for LTE connectivity. And at the heart of this useful gadget, we have a powerful 64 bit **dual-core ARM CPU**.

So don't wait for cable or satellite network providers to reach you – choose LHG LTE18 kit and always stay connected!

• Specifications

Product code	LHGGM&EG18-EA
CPU	88F3720 800 MHz
CPU architecture	ARM 64bit
Size of RAM	256 MB
Storage	16 MB flash
Number of 1G Ethernet ports	1
LTE modem	R11mL-EG18-EA
TAC	86981604
LTE category	18 (1.2Gbps Downlink, 150Mbps Uplink)
LTE FDD bands	1 (2100MHz) / 3 (1800MHz) / 5 (850MHz) / 7 (2600MHz) / 8 (900 MHz) / 20 (800MHz) / 28 (700MHz) / 38 (2600MHz) / 40 (2300MHz) / 41 (2500MHz)
3G category	R8 (42.2Mbps Downlink, 11.2Mbps Uplink)
3G bands	1 (2100MHz) / 3 (1800MHz) / 5 (850MHz) / 8 (900MHz)
Micro SIM slot	1
Dimensions	391 x 391 x 227 mm
Operating system	RouterOS v7, License level 3
Operating temperature	-40°C to +70°C

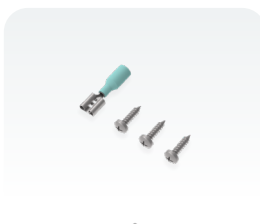
• Powering

PoE in	802.3af/at
Supported input Voltage	12-57 V
Power adapter nominal voltage	24 V
Power adapter nominal current	0.8 A
Max power consumption	8 W

• Included parts



24 V 0.8 A
power adapter



K-LHG
fastening set



PoE injector



2x hose clamps

- Antenna patterns

